

WINCHESTER REGIONAL AIRPORT (KOKV) · SOUTHEAST SIDE HANGARS

General aviation hangar condominium project

Concept design · Southeast side hangars · Winchester Regional Airport (KOKV)



A concept design for the general aviation hangar condominium development on the southeast side of Winchester Regional Airport (KOKV): eleven hangars across two buildings, with direct ramp access near the takeoff end of Runway 32. The set includes location and site plans, building concepts, and interior configurations.

Concept design by TMG Construction Corporation. Revised March 2021.

Peter Leonard-Morgan

ASSOCIATE BROKER

(443) 254-5530

peterleonard-morgan@hcsir.com

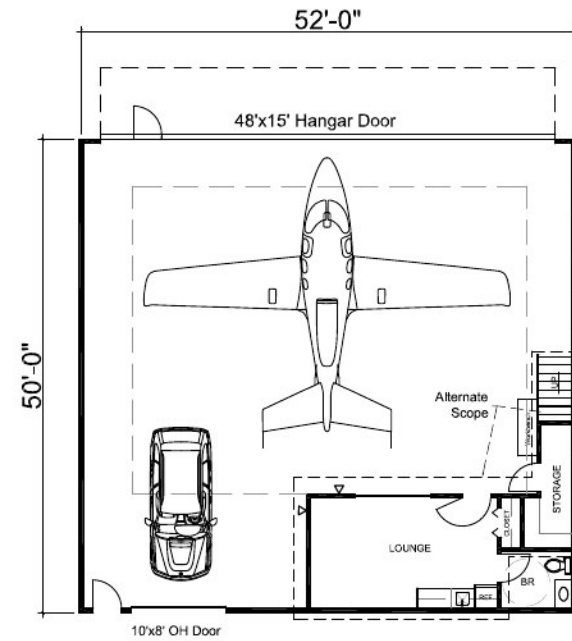
Charles Thies

REALTOR®

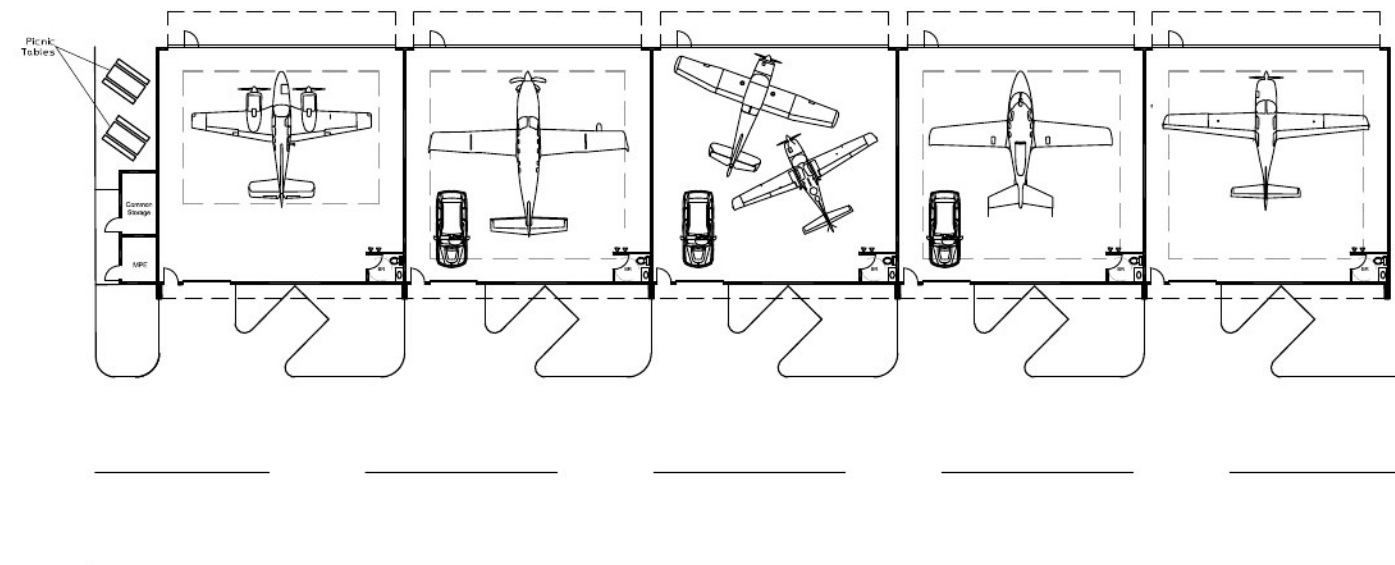
571.509.9918

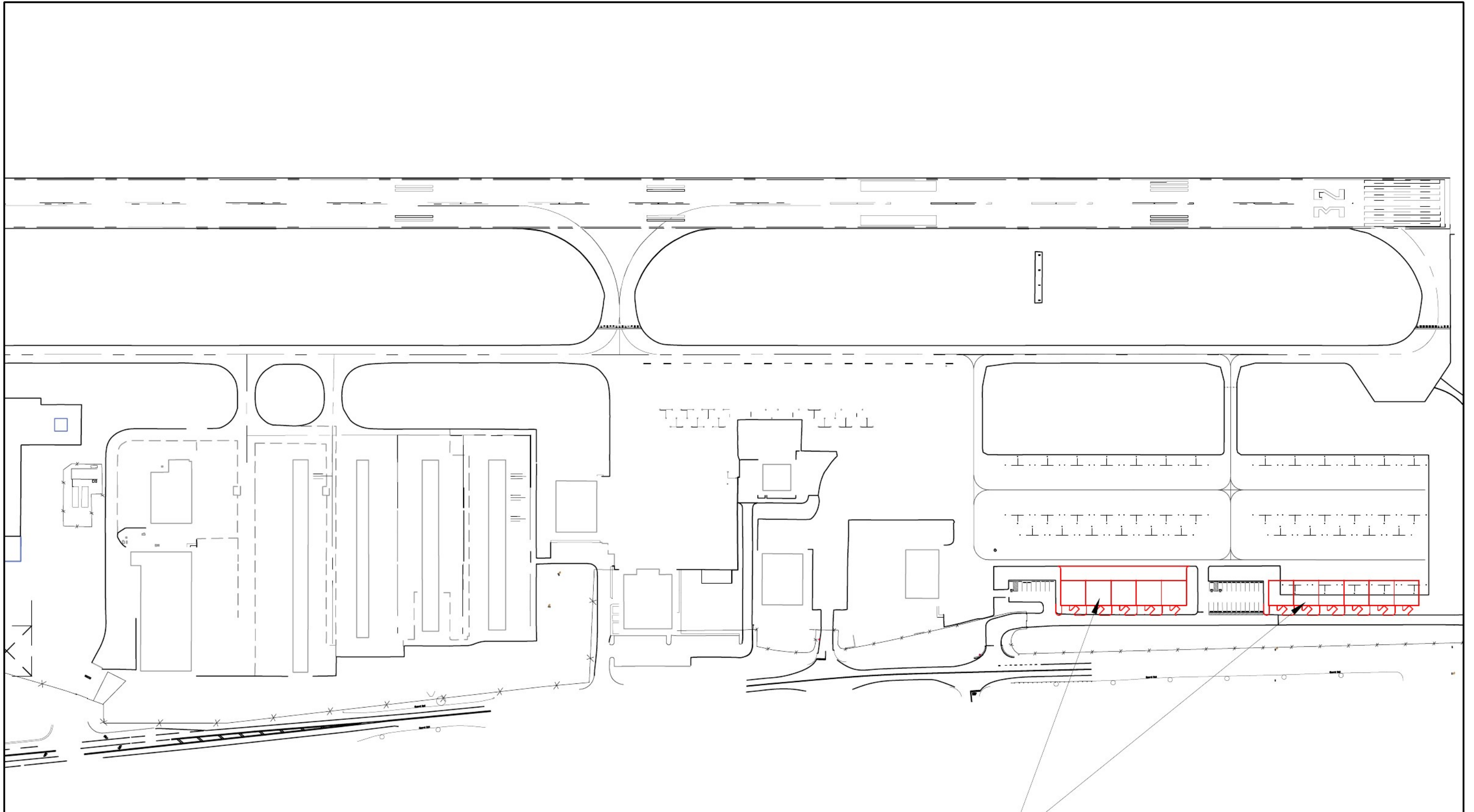
charles.thies@hcsir.com

Winchester, Virginia Regional Airport General Aviation Hangar Condominium Project Hangars SE Side - Concept Design

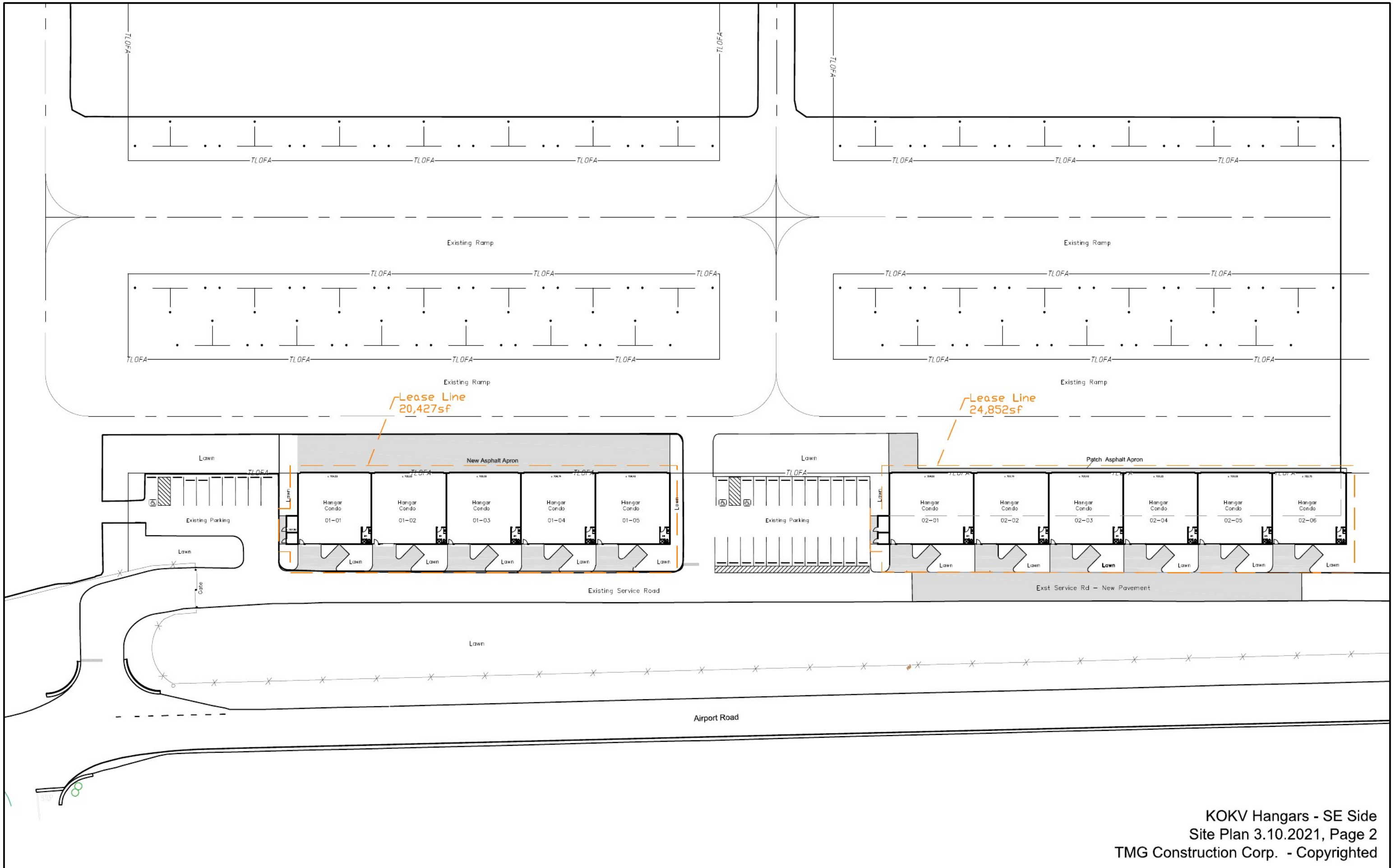


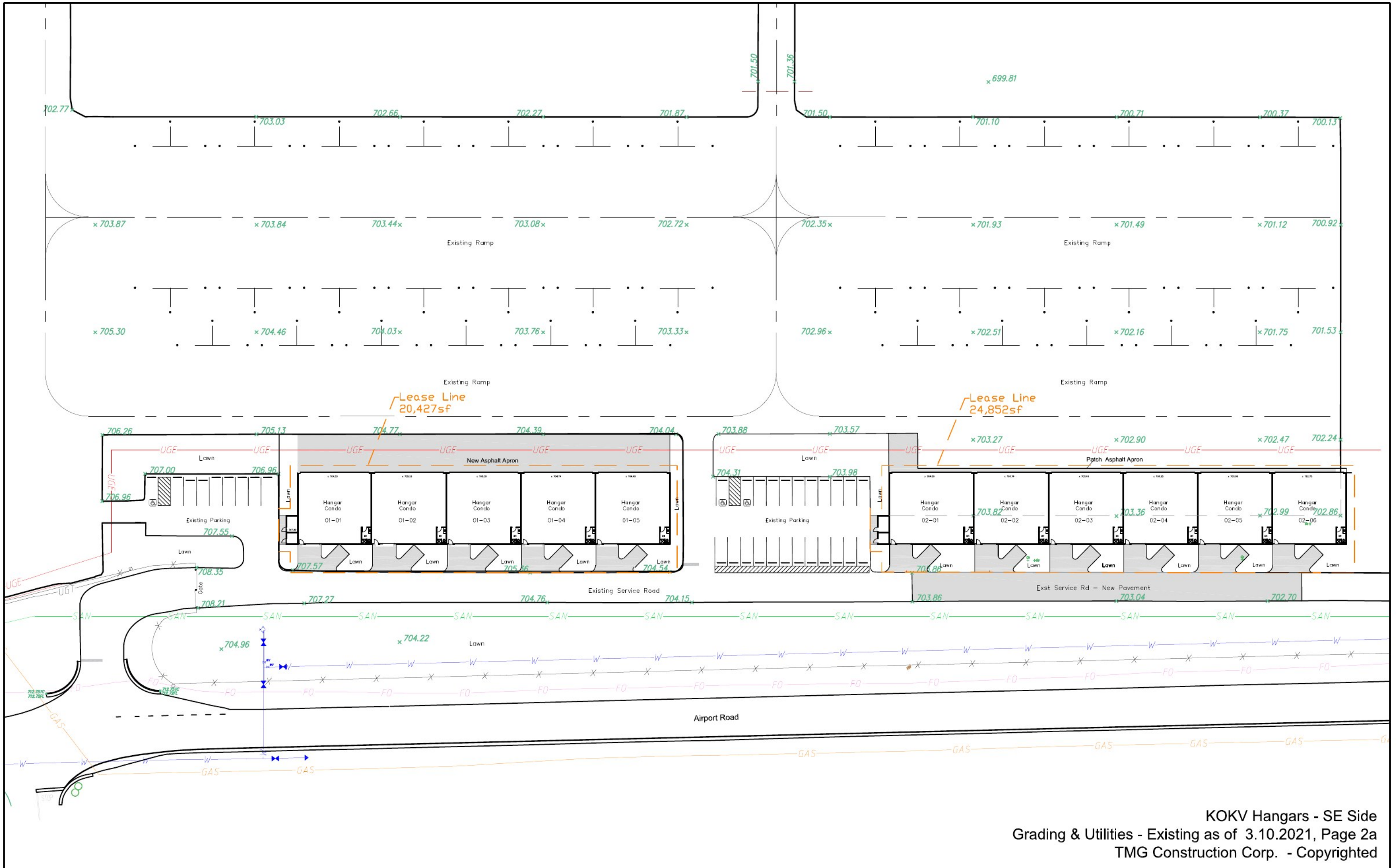
Page	Page Description	Rev Date
Cover	Cover Page	3.10.2021
Page 1	KOKV Hangars - SE Side, Location Concept Plan	3.10.2021
Page 2	KOKV Hangars - SE Side, Site Plan	3.10.2021
Page 2a	KOKV Hangars - SE Side, Grading and Utility Plan	3.10.2021
Page 3	KOKV Hangars - SE Side, Building #1 Concept Design	3.10.2021
Page 3a	KOKV Hangars - SE Side, Building #2 Concept Design	3.10.2021
Page 4	KOKV Hangars - SE Side, Interior BASE OPTION, 52'x50'	3.10.2021
Page 5	KOKV Hangars - SE Side, Interior Option #1, 52'x50'	3.10.2021
Page 6	KOKV Hangars - SE Side, Interior Option #2, 52'x50'	3.10.2021
Page 7	KOKV Hangars - SE Side, Interior Option #3, 60'x50'	3.10.2021

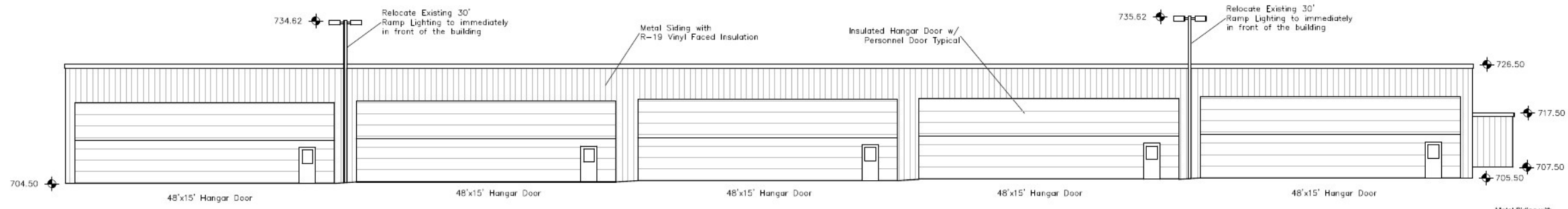




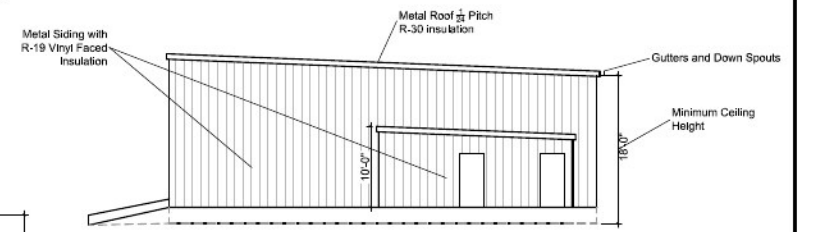
Proposed Location of eleven 50' deep hangars



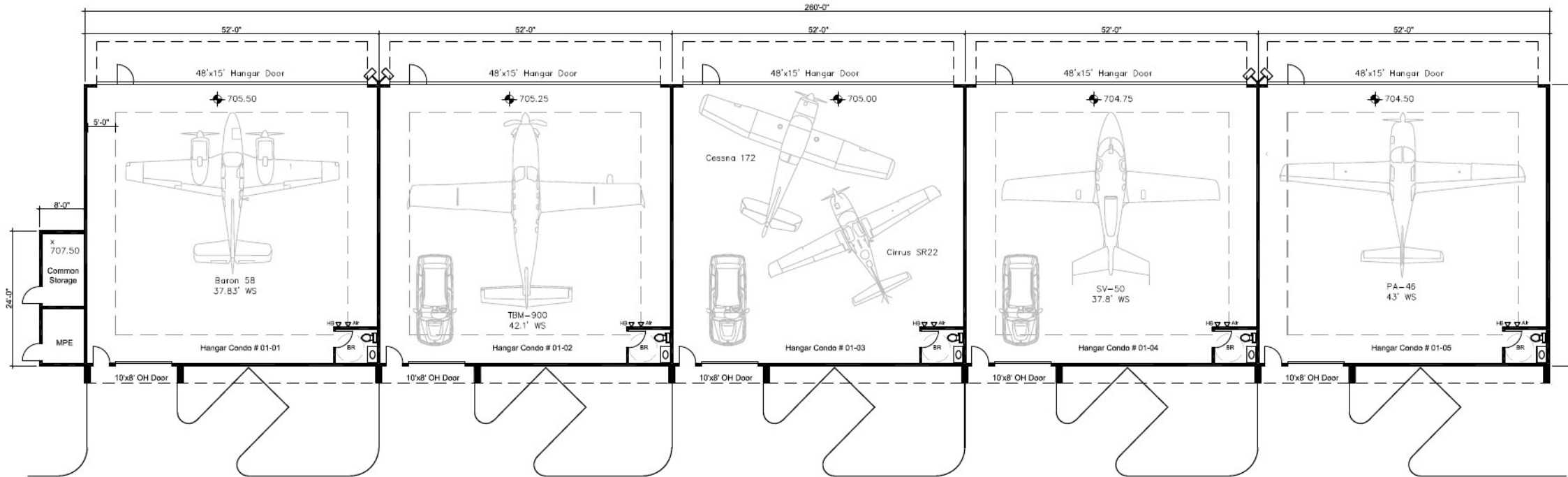




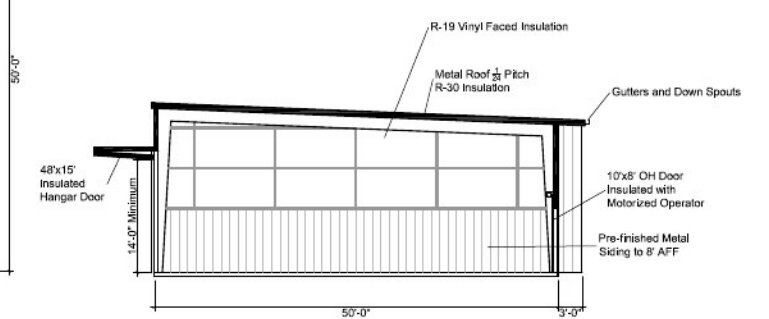
Elevation - Air Side



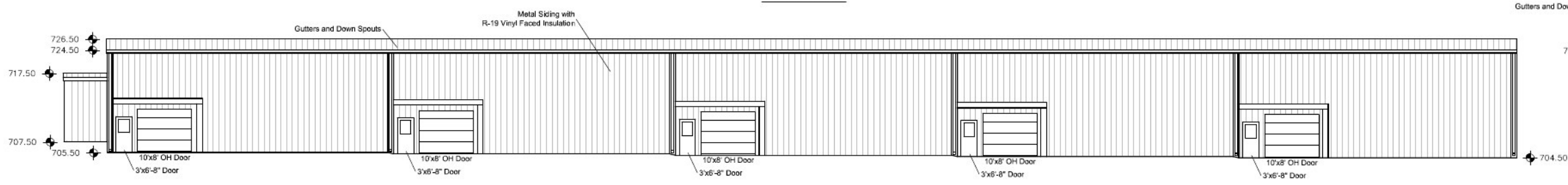
Elevation - Typical Side



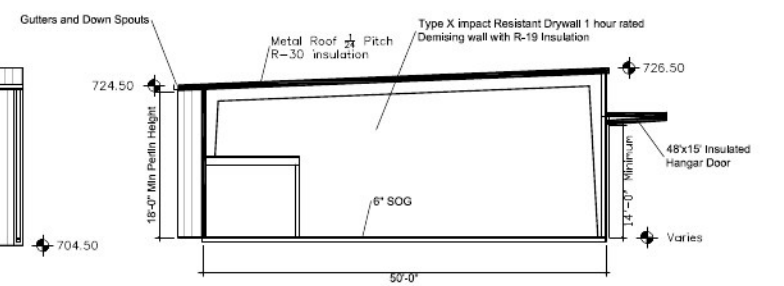
Plan View



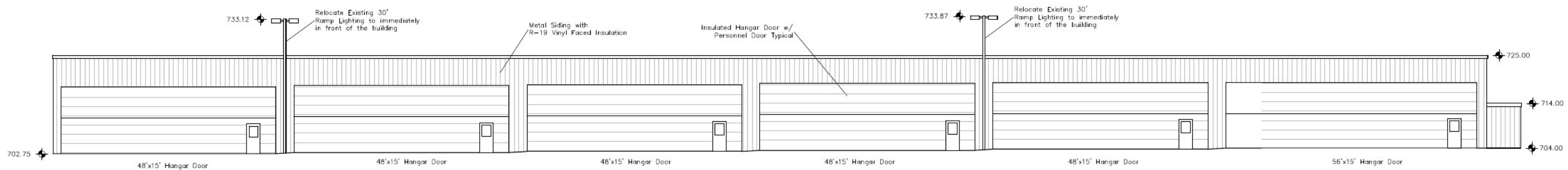
Typical Section @ Ext Wall



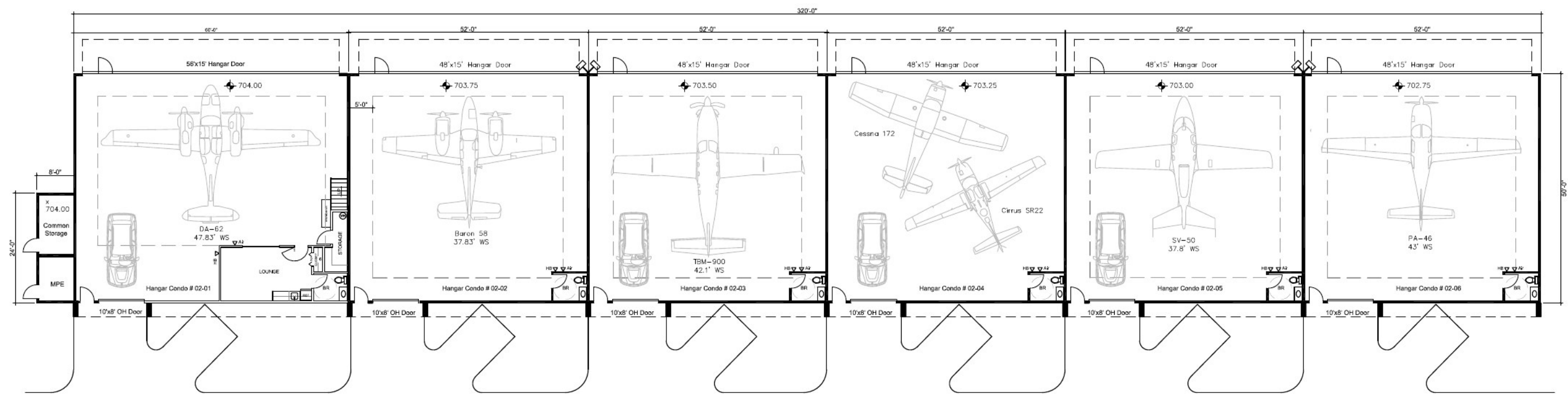
Elevation - Land Side



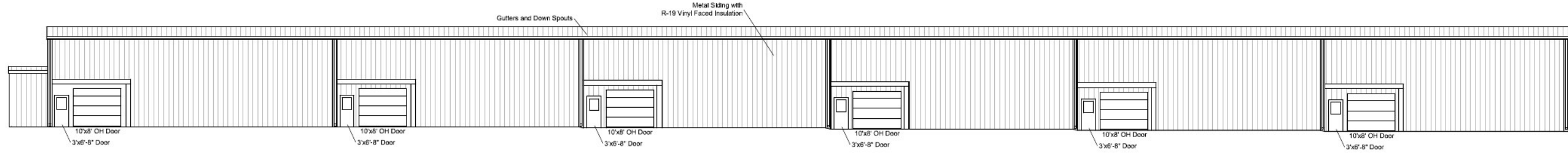
Interior Typical Section



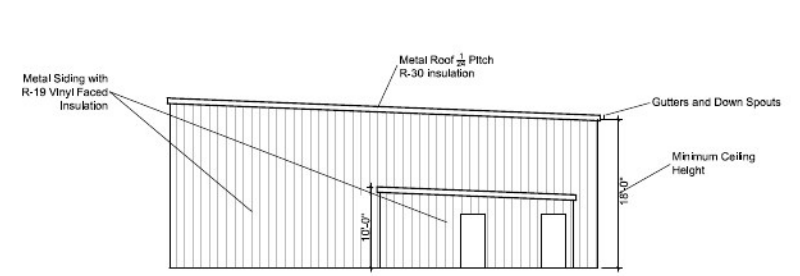
Elevation - Air Side



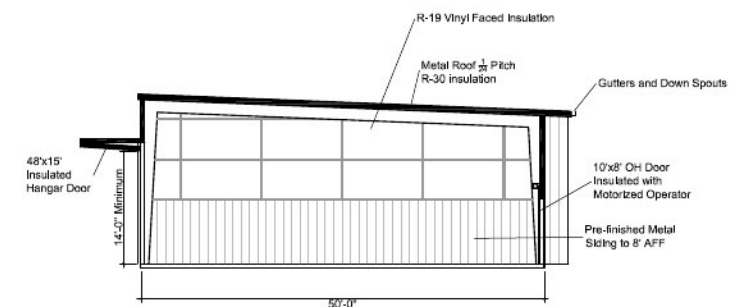
Plan View



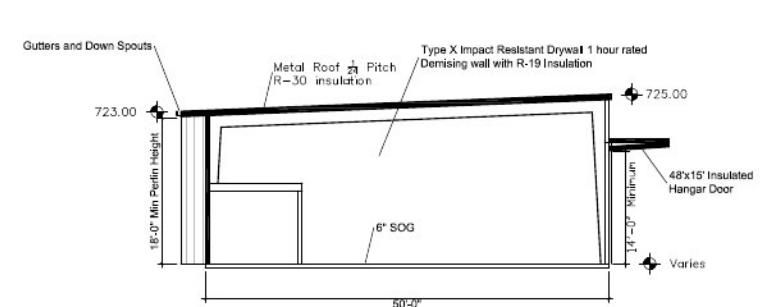
Elevation - Land Side



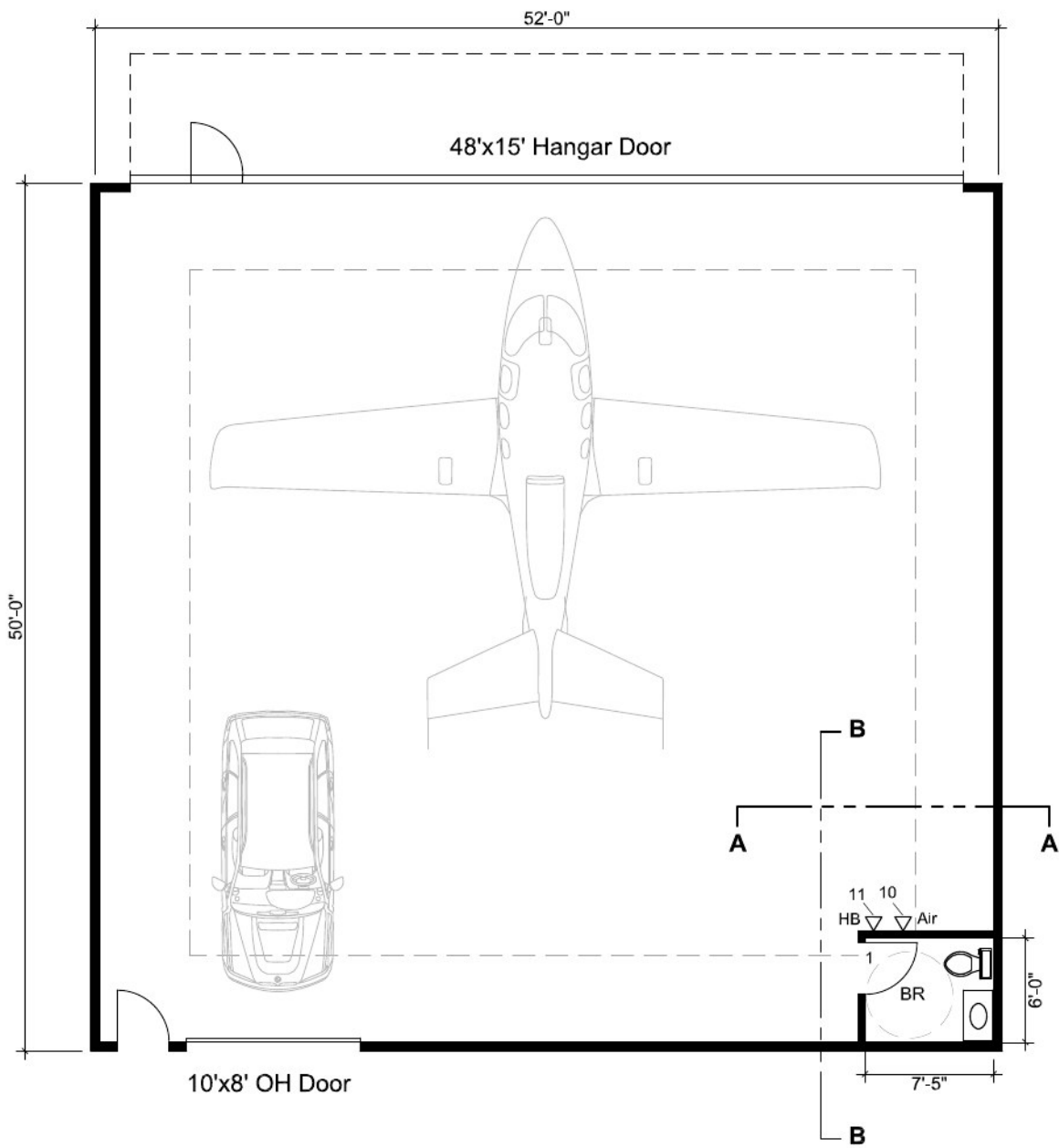
Elevation - Typical Side



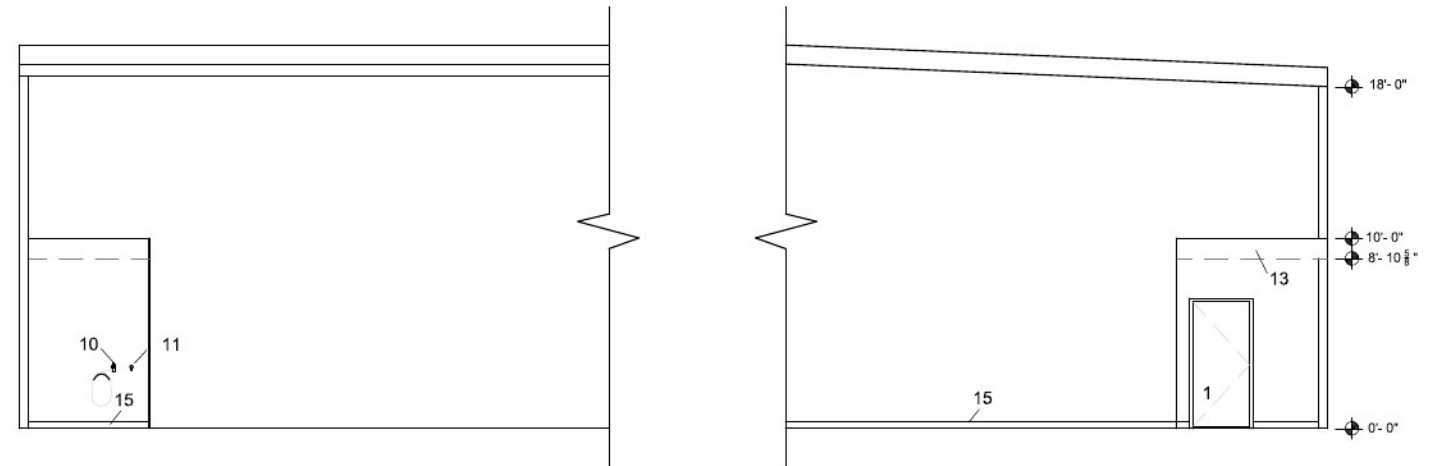
Typical Section @ Ext Wall



Interior Typical Section

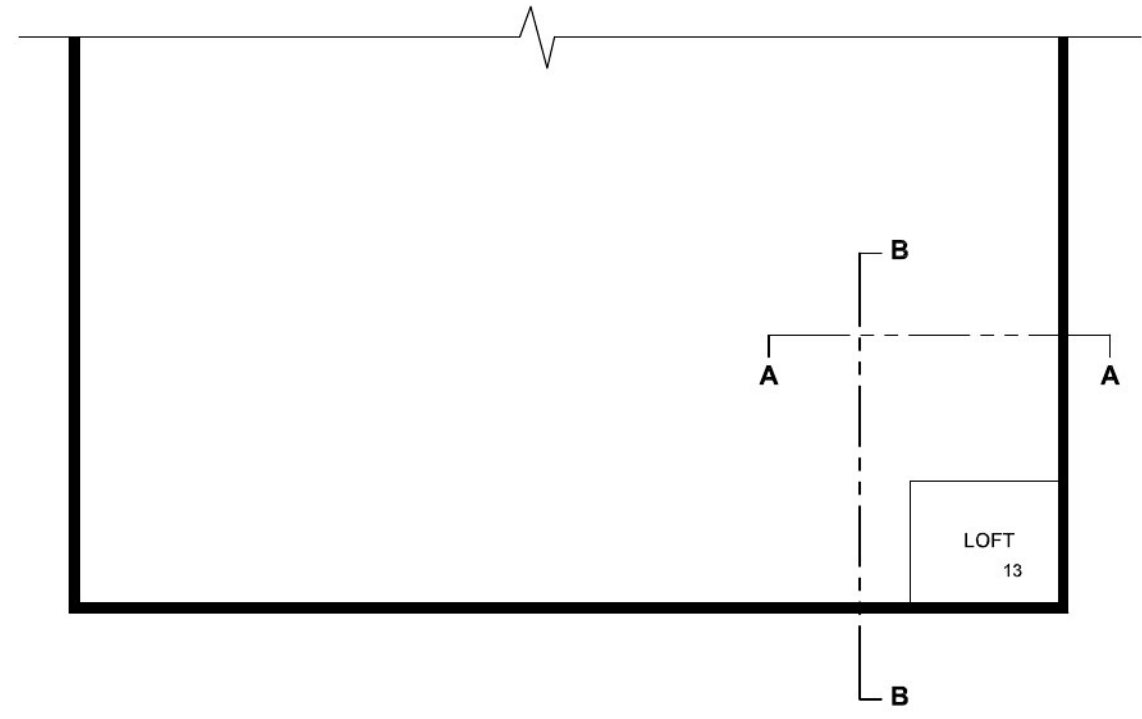


1st Floor Plan



Elevation AA

Section BB

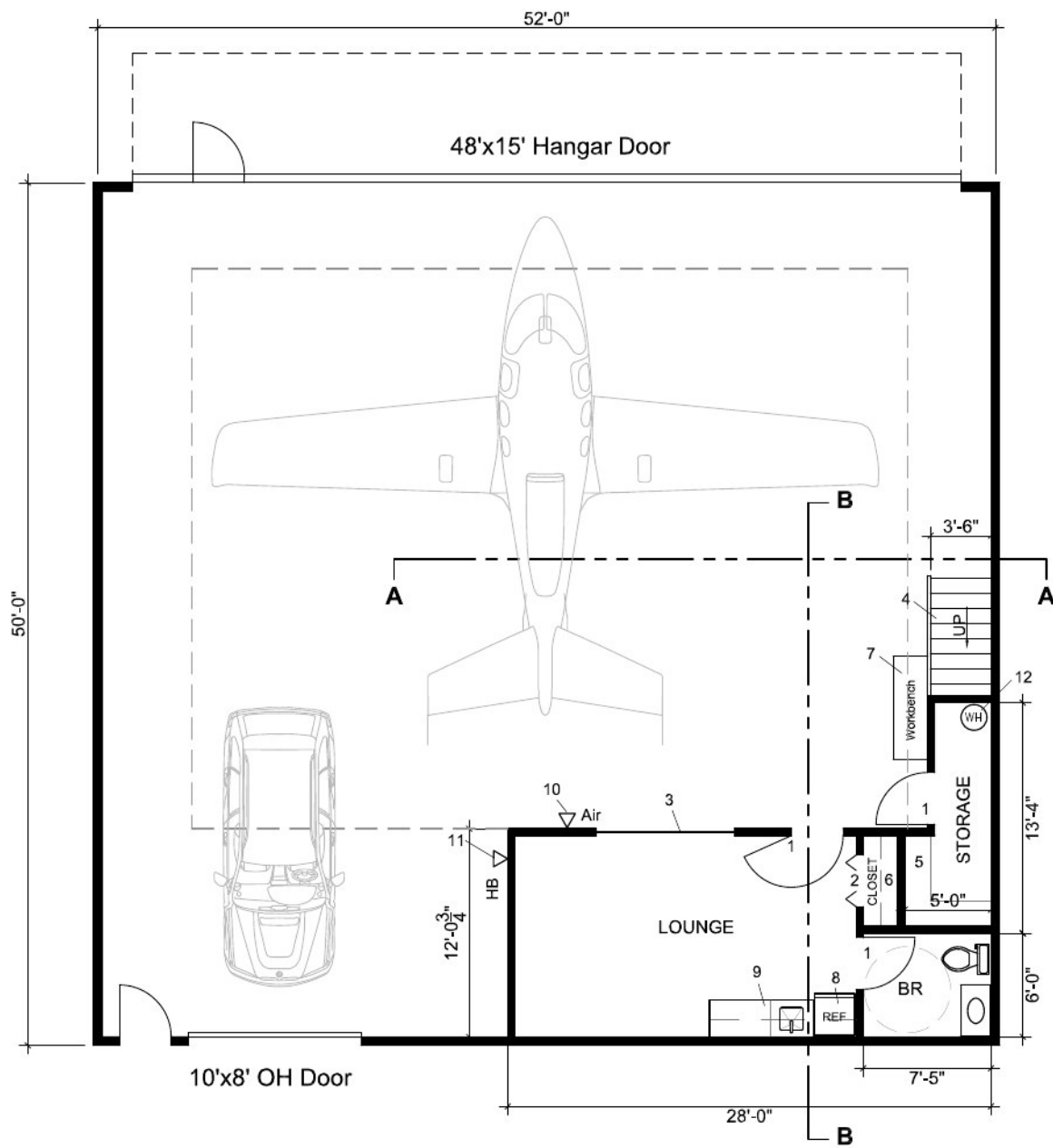


2nd Floor Plan (partial)

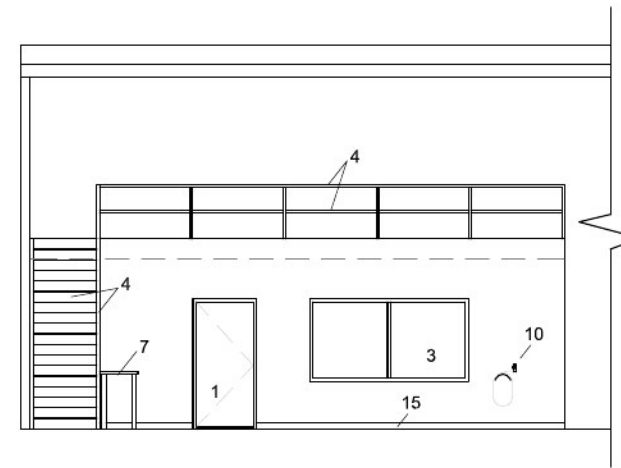
Page Notes:

- 1 3' x 6'-8" HM Frame, Wood Door
 - 2 3"x 6"-8" HM Frame, Bi-fold Wood Door
 - 3 8' x 4' Window - HM Frame w/ 1/4" Glass
 - 4 42" wide Misc Metal Pan Stair w/ Concrete
 - 5 CIP Treads and 1 1/2" Pipe Hand Rail
 - 6 84" H Wire Shelving - 5 Shelves
 - 7 12" Coat Shelf and Rod
 - 8 72" x 24" Maple top Workbench
 - 9 30" SS Refrigerator
 - 10 60" of Base and 90" of Wall Cabinets with Corian Top w/ 16"x16"x8" Sink
 - 11 Air Regulator / Compressed Air Outlet
 - 12 Hose Bib
 - 13 30 Gallon Electric Water Heater
 - 14 12" Joist, R11 Insulation, 3/4" CDX and Painted 5/8" DW Ceilings
 - 15 Painted 5/8" DW Ceiling on DW Grid
 - 16 4" Vinyl Base (Typical)
- 3 5/8" Metal Studs, R11 Batt Insulation
- 5/8" Drywall Painted Partition

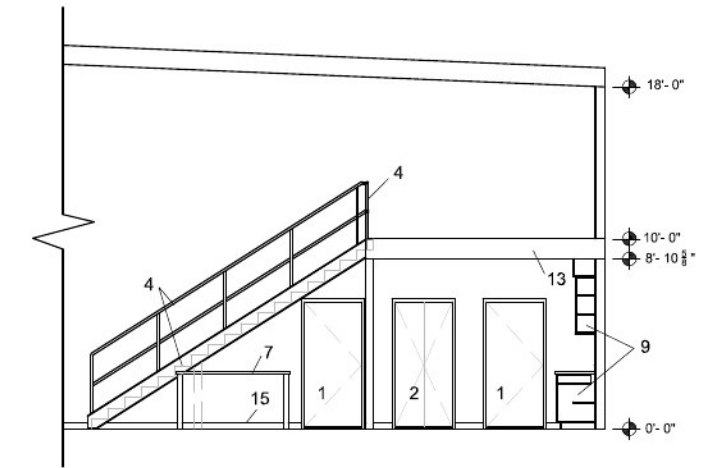
Interior - Base Option



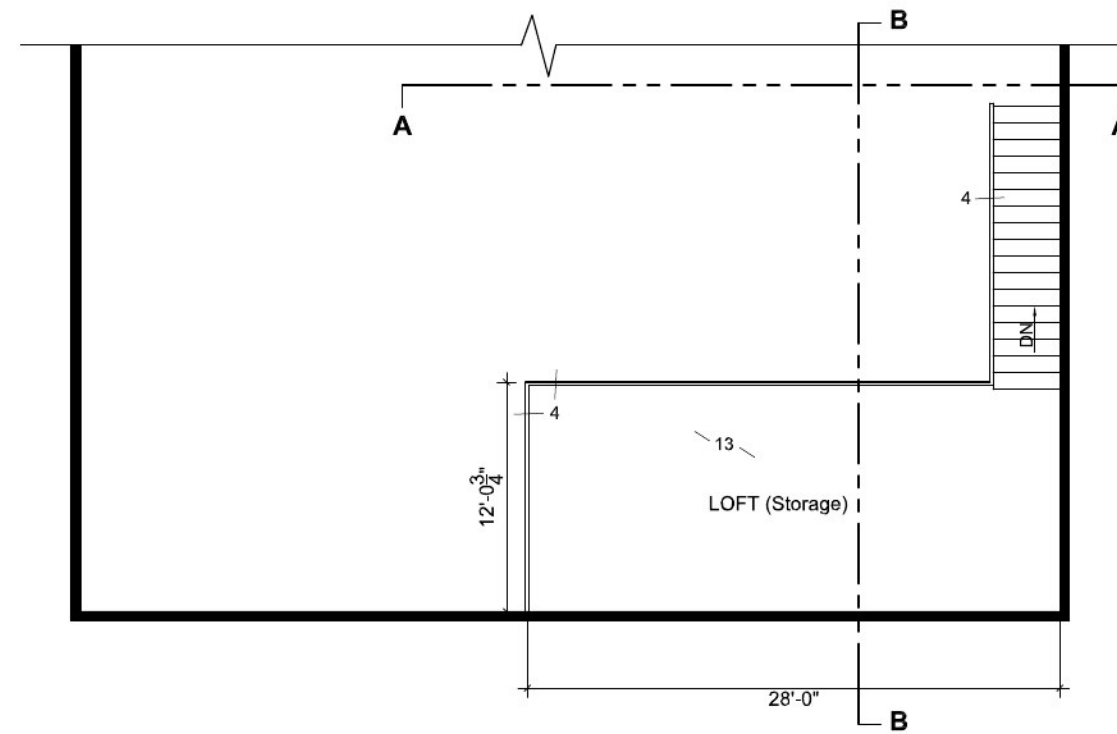
1st Floor Plan



Elevation AA



Section BB

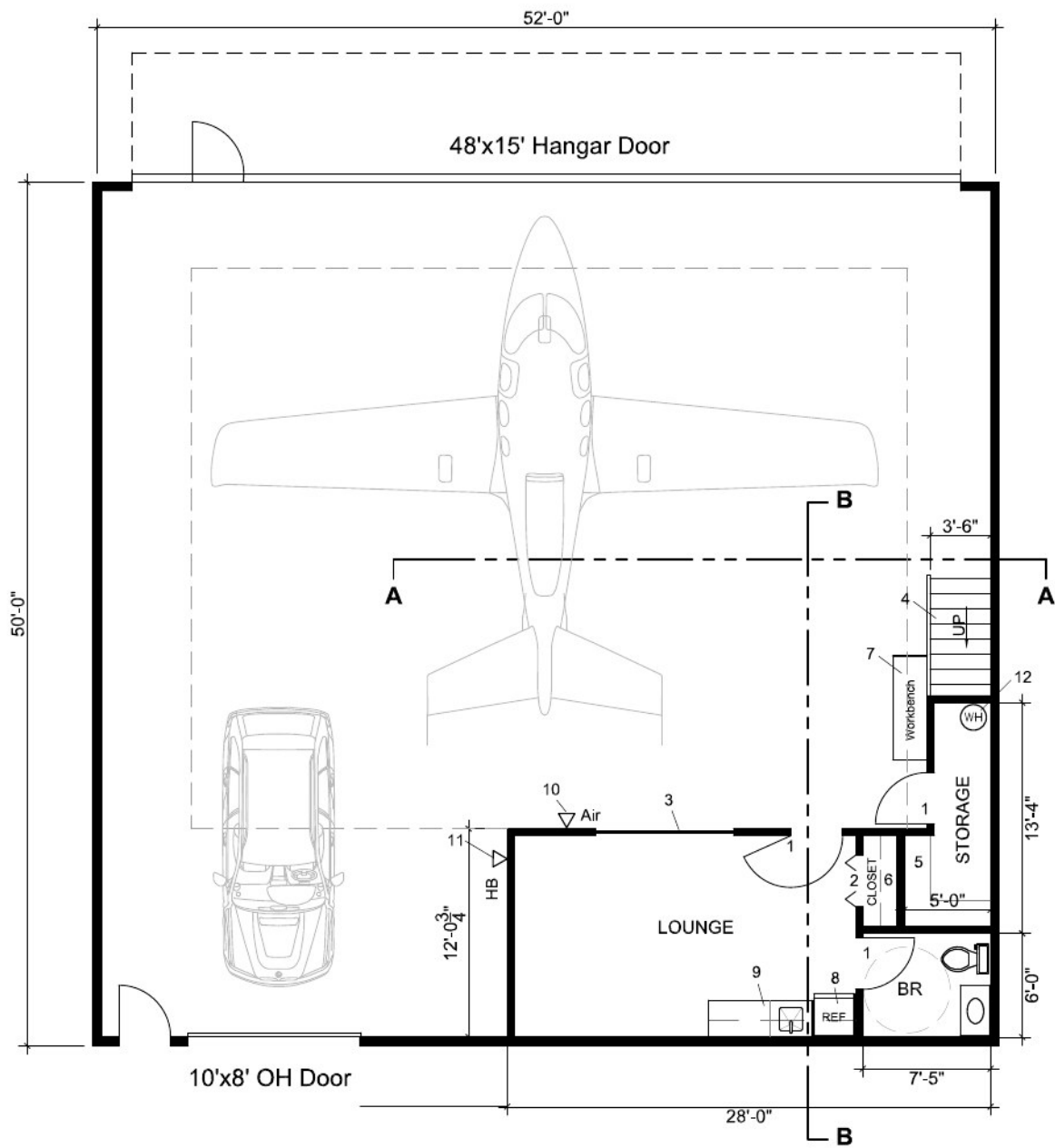


2nd Floor Plan (partial)

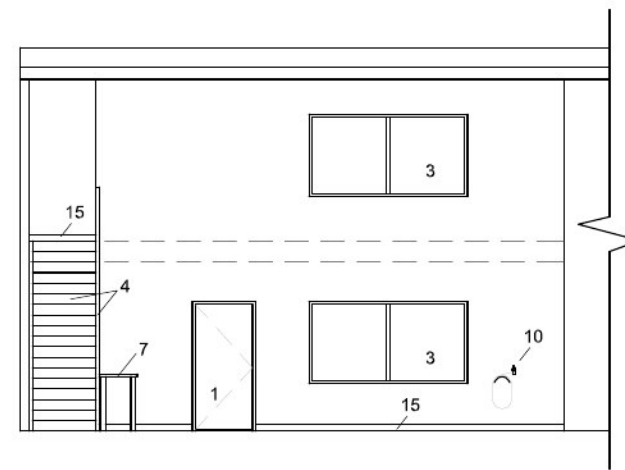
Page Notes:

- 1 3' x 6'-8" HM Frame, Wood Door
 - 2 3'x 6"-8" HM Frame, Bi-fold Wood Door
 - 3 8' x 4' Window - HM Frame w/ 1/4" Glass
 - 4 42" wide Misc Metal Pan Stair w/ Concrete CIP Treads and 1 1/2" Pipe Hand Rail
 - 5 84" H Wire Shelving - 5 Shelves
 - 6 12" Coat Shelf and Rod
 - 7 72" x 24" Maple top Workbench
 - 8 30" SS Refrigerator
 - 9 60" of Base and 90" of Wall Cabinets with Corian Top w/ 16"x16"x8" Sink
 - 10 Air Regulator / Compressed Air Outlet
 - 11 Hose Bib
 - 12 30 Gallon Electric Water Heater
 - 13 12" Joist, R11 Insulation, 3/4" CDX and Painted 5/8" DW Ceilings
 - 14 Painted 5/8" DW Ceiling on DW Grid
 - 15 4" Vinyl Base (Typical)
- 3/8" Metal Studs, R11 Batt Insulation
 5/8" Drywall Painted Partition

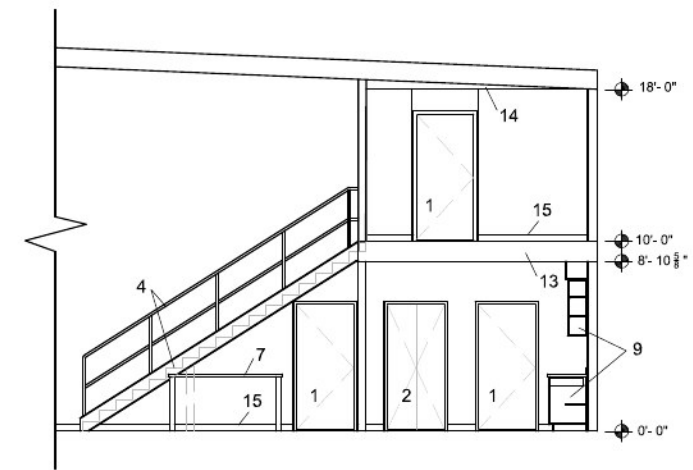
Interior Option #1



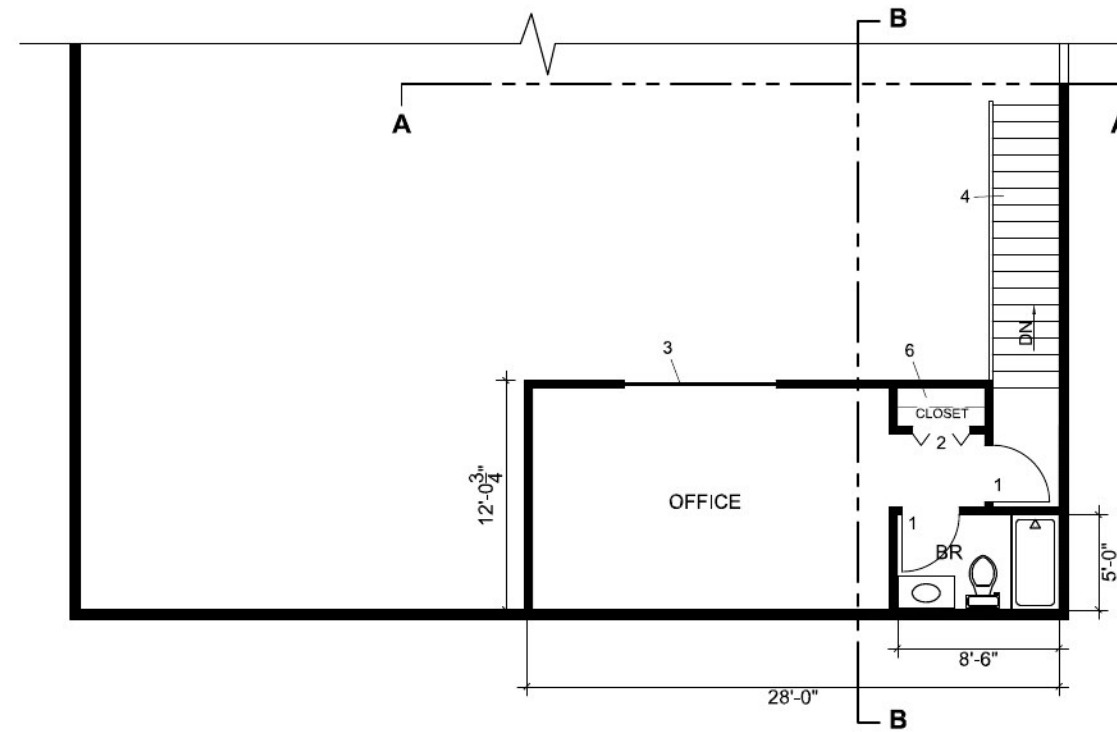
1st Floor Plan



Elevation AA



Section BB

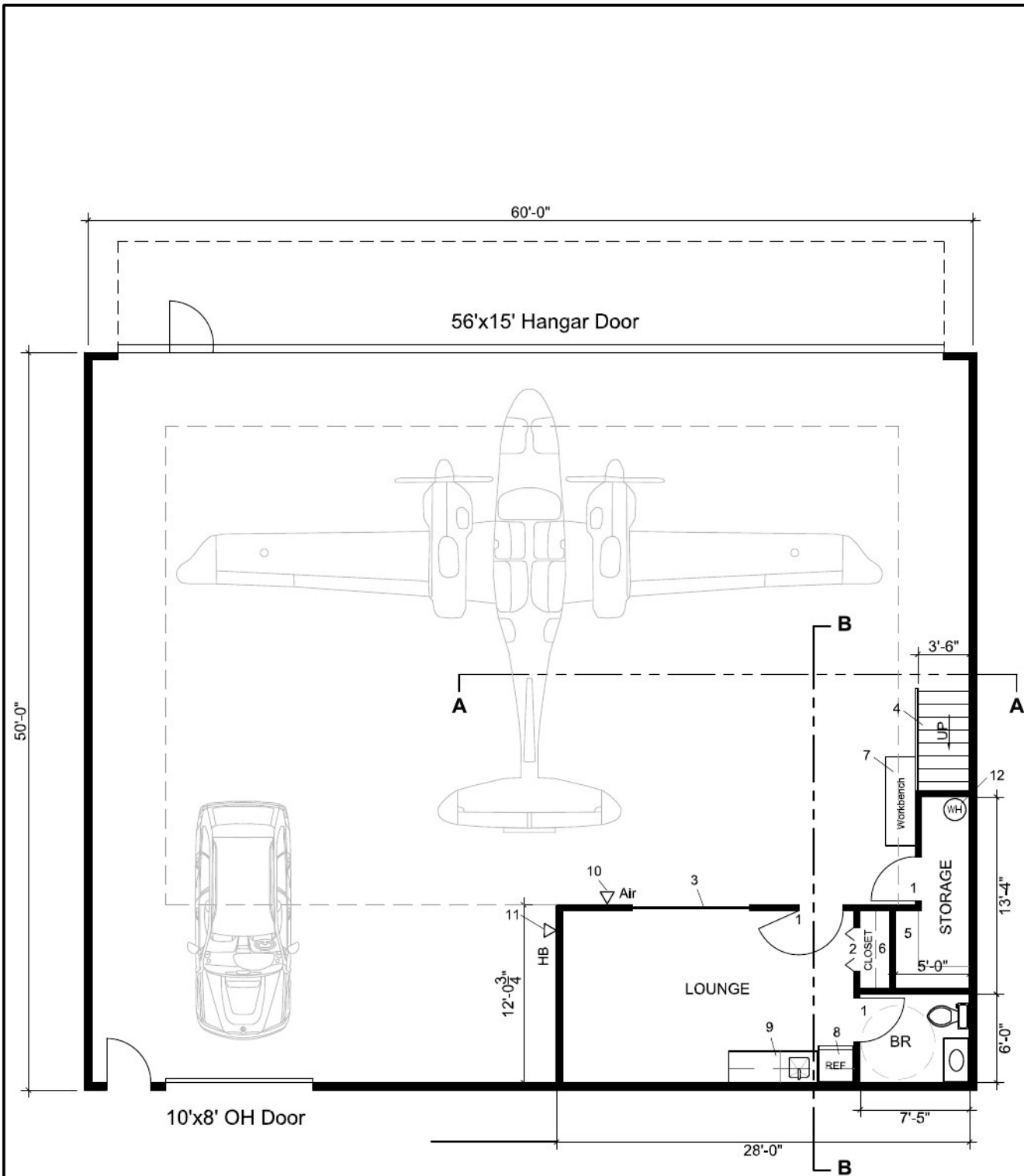


2nd Floor Plan (partial)

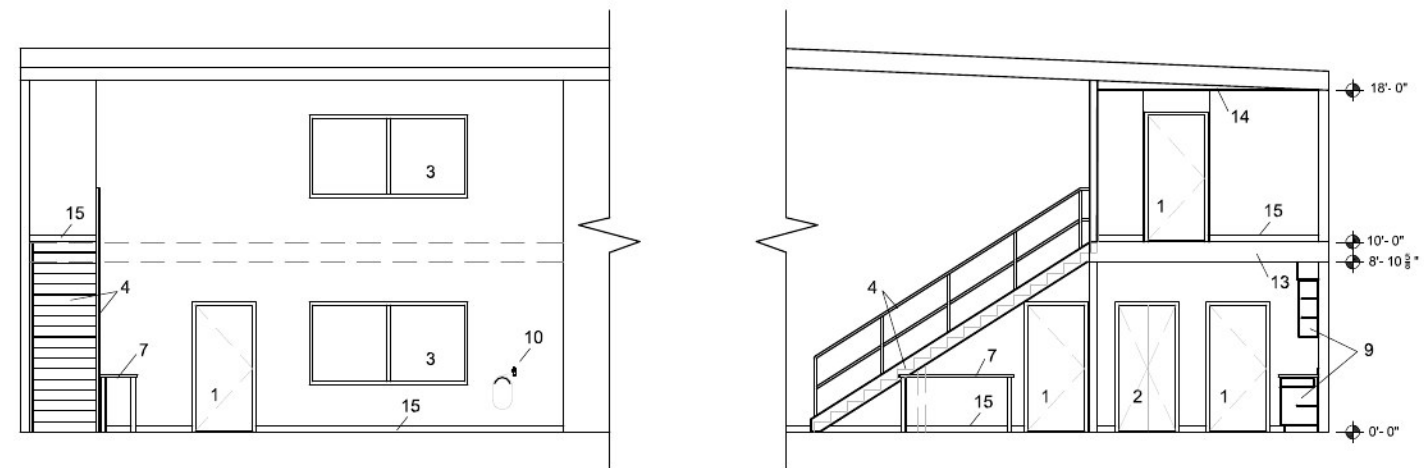
Page Notes:

- 1 3' x 6'-8" HM Frame, Wood Door
 - 2 3"x 6"-8" HM Frame, Bi-fold Wood Door
 - 3 8' x 4' Window - HM Frame w/ 1/4" Glass
 - 4 42" wide Misc Metal Pan Stair w/ Concrete CIP Treads and 1 1/2" Pipe Hand Rail
 - 5 84" H Wire Shelving - 5 Shelves
 - 6 12" Coat Shelf and Rod
 - 7 72" x 24" Maple top Workbench
 - 8 30" SS Refrigerator
 - 9 60" of Base and 90" of Wall Cabinets with Corian Top w/ 16"x16"x8" Sink
 - 10 Air Regulator / Compressed Air Outlet
 - 11 Hose Bib
 - 12 30 Gallon Electric Water Heater
 - 13 12" Joist, R11 Insulation, 3/4" CDX and Painted 5/8" DW Ceilings
 - 14 Painted 5/8" DW Ceiling on DW Grid
 - 15 4" Vinyl Base (Typical)
- 3/8" Metal Studs, R11 Batt Insulation
 5/8" Drywall Painted Partition

Interior Option #2

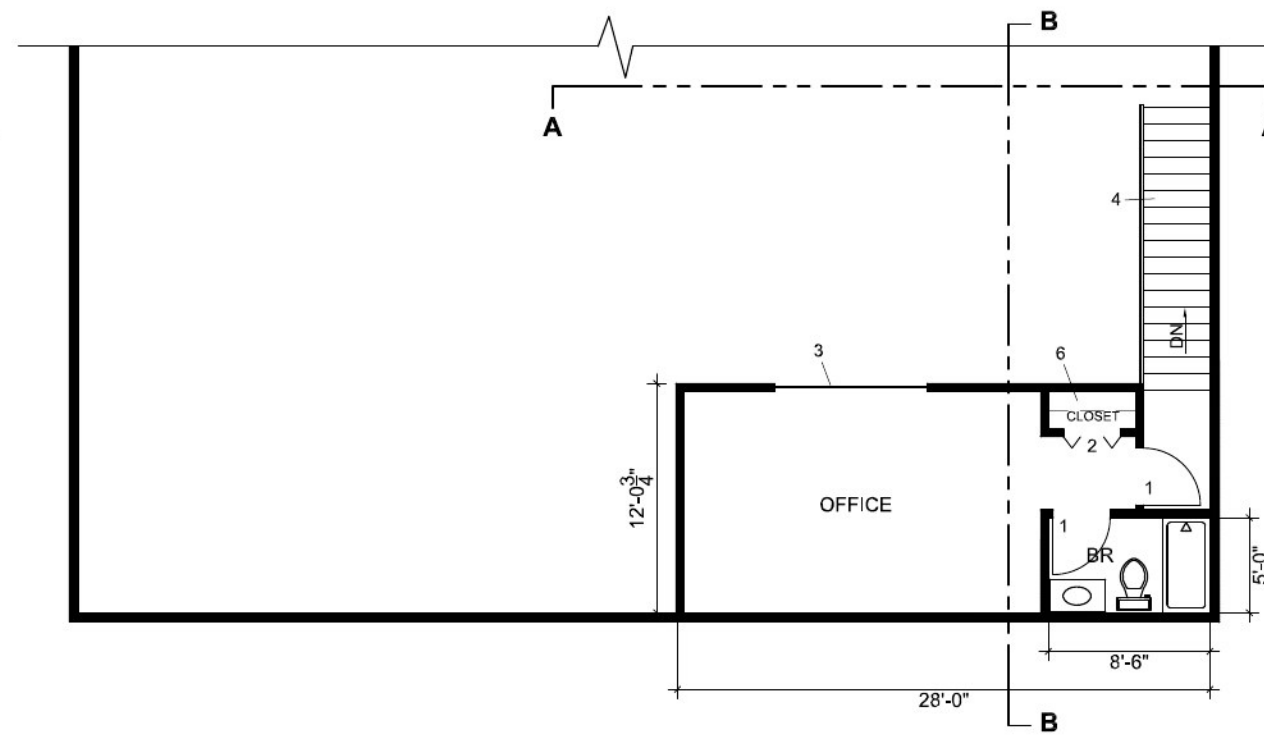


1st Floor Plan



Elevation AA

Section BB



2nd Floor Plan (partial)

Page Notes:

- 1 3' x 6'-8" HM Frame, Wood Door
 - 2 3'x 6'-8" HM Frame, Bi-fold Wood Door
 - 3 8' x 4' Window - HM Frame w/ 1/4" Glass
 - 4 42" wide Misc Metal Pan Stair w/ Concrete CIP Treads and 1 1/2" Pipe Hand Rail
 - 5 84" H Wire Shelving - 5 Shelves
 - 6 12" Coat Shelf and Rod
 - 7 72" x 24" Maple top Workbench
 - 8 30" SS Refrigerator
 - 9 60" of Base and 90" of Wall Cabinets with Corian Top w/ 16"x16"x8" Sink
 - 10 Air Regulator / Compressed Air Outlet
 - 11 Hose Bib
 - 12 30 Gallon Electric Water Heater
 - 13 12" Joist, R11 Insulation, 3/4" CDX and Painted 5/8" DW Ceilings
 - 14 Painted 5/8" DW Ceiling on DW Grid
 - 15 4" Vinyl Base (Typical)
- 3/8" Metal Studs, R11 Batt Insulation
 5/8" Drywall Painted Partition

Interior Option #3 - 60' x 50'



Winchester Regional Airport (KOKV) hangars

Peter Leonard-Morgan
ASSOCIATE BROKER

(443) 254-5530
peterleonard-morgan@hcsir.com

Charles Thies
REALTOR®

571.509.9918
charles.thies@hcsir.com

Home. Land. Legacy.